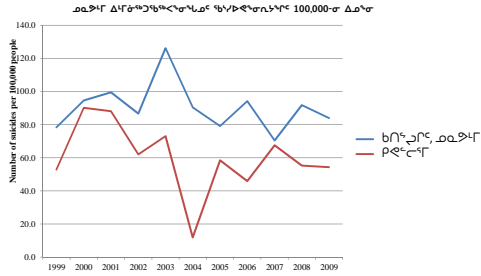


በበናኔሀረረው ድንገራዊ-ሙዞር፡ ነፍሰ ልምድ ለየተሳሳታ አካላት ለመስጠት ልዩ ልዩ ስራዎች

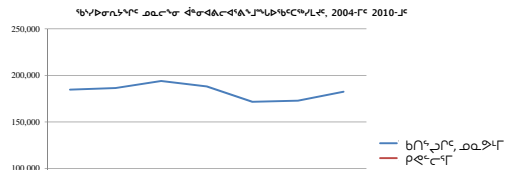


- 2009-፲ የሕክምና ስራዎች ስርዓት፡
- 40.8% 20 ጋራ ስራዎች
 - 77.8% ስራዎች
 - 96.3% ስራዎች

13 | የፋይናንስ ስራዎች ለማስፈጸም፡ ለጊዜ ጋራ ስራዎች ለማስፈጸም፡ የሥራ ስራዎች ለማስፈጸም



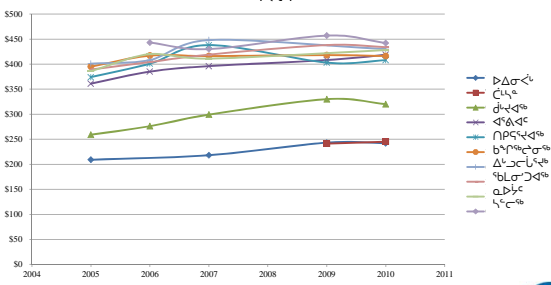
በበናኔሀረረው ድንገራዊ-ሙዞር፡ ነፍሰ ልምድ ለየተሳሳታ አካላት ለመስጠት ልዩ ልዩ ስራዎች



14 | የፋይናንስ ስራዎች ለማስፈጸም፡ ለጊዜ ጋራ ስራዎች ለማስፈጸም፡ የሥራ ስራዎች ለማስፈጸም



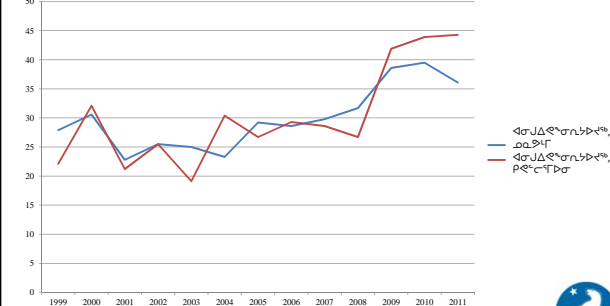
በበናኔሀረረው ድንገራዊ-ሙዞር፡ ስራዎች ለየተሳሳታ አካላት ለመስጠት ልዩ ልዩ ስራዎች



15 | የፋይናንስ ስራዎች ለማስፈጸም፡ ለጊዜ ጋራ ስራዎች ለማስፈጸም፡ የሥራ ስራዎች ለማስፈጸም

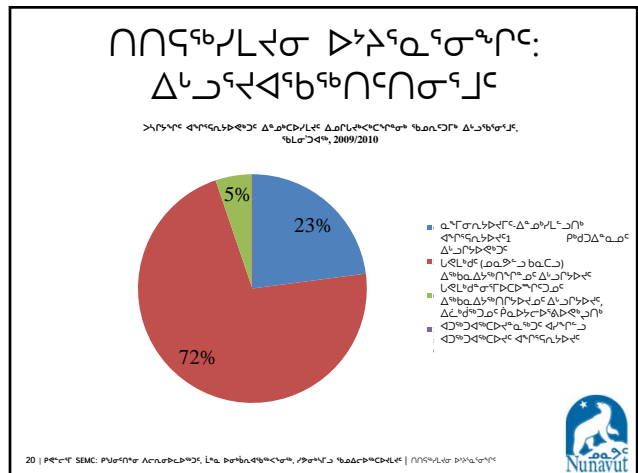
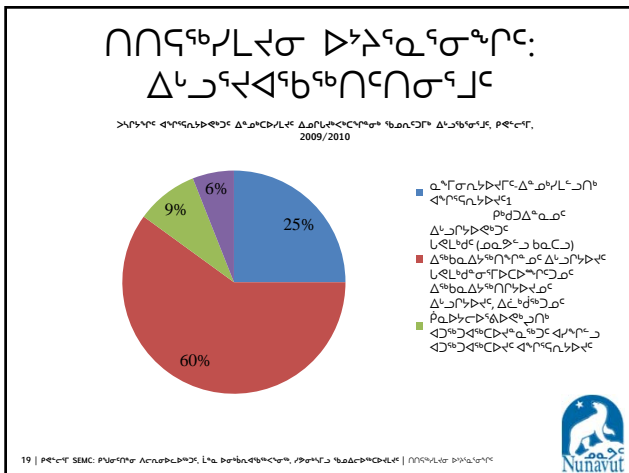
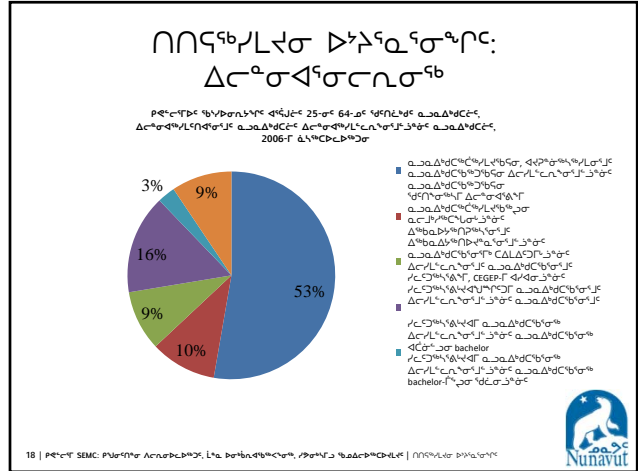
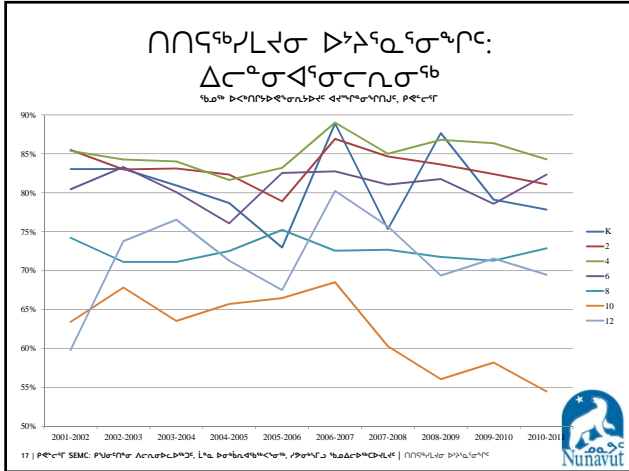


በበናኔሀረረው ድንገራዊ-ሙዞር፡ ስራዎች ለየተሳሳታ አካላት ለመስጠት ልዩ ልዩ ስራዎች



16 | የፋይናንስ ስራዎች ለማስፈጸም፡ ለጊዜ ጋራ ስራዎች ለማስፈጸም፡ የሥራ ስራዎች ለማስፈጸም





Affaires autochtones et Développement du Nord Canada / Aboriginal Affairs and Northern Development Canada

መዳኛ ርገዳው ፍላጎቱን ናብ ስጦት ነፃ ይቀርቡ

ክፍለ-ህግ ናይ ብሔራዊ ግብርና፡

- በርካታ ለስጦት ናብ ስጦት ደረጃ ይደርገልኩም ኣብ 12.7.6
- ለግዴታ ኣለኩም (መዳኛ ስጦት፣ መዳኛ ግንባታ ስጦት፣ መዳኛ ነፃ ደረጃ፣ መዳኛ ልማት ስጦት፣ መዳኛ ርገዳው ፍላጎቱን ስጦት ኮይኖር፣ መዳኛ ርገዳው ፍላጎቱን ናብ ስጦት)
- መዳኛ ርገዳው ፍላጎቱን ናብ ስጦት ነፃ ይቀርቡ

መዳኛ ርገዳው ፍላጎቱን ናብ ስጦት ነፃ ይቀርቡ ኣለዎ፡

- ልማት ናብ ስጦት ነፃ ይቀርቡ ለግዴታ ናብ ስጦት ነፃ ይቀርቡ
- መዳኛ ርገዳው ፍላጎቱን ናብ ስጦት ነፃ ይቀርቡ ለግዴታ ናብ ስጦት ነፃ ይቀርቡ
- መዳኛ ርገዳው ፍላጎቱን ናብ ስጦት ነፃ ይቀርቡ ለግዴታ ናብ ስጦት ነፃ ይቀርቡ
- ን ኣገልግሎት ናብ ስጦት ነፃ ይቀርቡ ለግዴታ ናብ ስጦት ነፃ ይቀርቡ

5

Affaires autochtones et Développement du Nord Canada / Aboriginal Affairs and Northern Development Canada

ፍላጎት ናብ ስጦት ነፃ ይቀርቡ

• ን ኣገልግሎት ናብ ስጦት ነፃ ይቀርቡ ለግዴታ ናብ ስጦት ነፃ ይቀርቡ

• ን ኣገልግሎት ናብ ስጦት ነፃ ይቀርቡ ለግዴታ ናብ ስጦት ነፃ ይቀርቡ

• ን ኣገልግሎት ናብ ስጦት ነፃ ይቀርቡ ለግዴታ ናብ ስጦት ነፃ ይቀርቡ

6

Affaires autochtones et Développement du Nord Canada / Aboriginal Affairs and Northern Development Canada

Qujanamiik Matna

Koana Thank You Merci

ደንብ

ርዕይ ናይ
 ፍላጎት ናብ ስጦት ነፃ ይቀርቡ
 ለግዴታ ናብ ስጦት ነፃ ይቀርቡ
 ልማት ናብ ስጦት ነፃ ይቀርቡ
 ድምር: (867) 975-4553
 Email: Tamara.Fast@aandc.gc.ca

7



Kiggavik Project – Socioeconomic Monitoring Committee Update

ᑭᑭᑖᑭ ᐱᑦᓂᑦᓱᑯᑦ - ᐱᑦᑦᑦᑦᑯᑦᑦᑦ ᑭᑦᐅᑦᐱᑦᓃᑦ ᑲᑎᐱᑦᑯᑯᑦᑦ
ᑭᑦᓃᑦᐅᑦᓂᓂᑦᑯᑦᑦ

Barry McCallum ᐱᐅᓂ ᐱᑲᑦᑯᑦ
Rankin Inlet, October 16-17, 2012
ᑲᑦᓃᑦᐱᑦᑯᑦᑦ ᑦᐅᑦᑦᑦ 16-17, 2012



What is the AREVA Kiggavik Project?

ᑭᑦᓃᑦᐅᑦ ᑦᓃᑦᑦᑦ ᑭᑦᓱᑦᑦᑯᑦ ᐱᑦᓂᑦᓱᑯᑦ?

► Proposed uranium mining and milling operation

ᐱᑦᓂᑦᓱᑯᑦᑦᑦ ᓄᑦᑯᑦᑯᑦ ᐅᑦᑯᑦᑯᑦᑯᑦᑯᑦ ᑯᑯᑦ ᑭᑦᑲᑦᑯᓂᑦᑯᑦ ᐱᑦᓂᑦᓱᑯᑦ

◆ Workforce of 600 for the operation, with a large percentage from the Kivalliq region, and developing local business

ᐱᑦᓂᑦᑯᑦ 600 ᐱᑦᓂᑦᑯᑦᑯᑦᑯᑦ, ᑯᑯᑦᑯᑦ ᑭᑦᑯᑦᑯᑦᑯᑦ, ᑯᑯᑦ ᐱᑦᓂᑦᓱᑯᑦᑦ ᓄᑦᑯᑦᑯᑦ ᐱᑯᑦᑯᑦᑯᑦᑯᑦ ᓄᑦᑯᑦᑯᑦ

◆ \$5.5 billion in capital, operating and decommissioning expenditures over 20 years (based on current resources)

5.5 ᐱᑦᑯᑦᑯᑦ ᑲᑎᑯᑦᑯᑦᑯᑦ, ᐱᑦᓂᑦᓱᑯᑦᑯᑦ ᑯᑯᑦ ᐱᑦᓂᑦᑯᑦᑯᑦᑯᑦ
ᑦᑯᑦᑯᑦᑯᑦᑯᑦᑯᑦ ᑯᑯᑦᑯᑦᑯᑦ ᑯᑯᑦᑯᑦ ᑯᑯᑦ ᑯᑯᑦᓱᑯᑦᑯᑦᑯᑦ

Socioeconomic Monitoring Committee Update October 26, 2011 - p.3
Socioeconomic Monitoring Committee Update October 16-17, 2012 - p.3



Project Location ᐱᑦᓂᑦᓱᑯᑦᑯᑦ ᓄᑦᑯᑦᑯᑦ



Socioeconomic Monitoring Committee Update October 16-17, 2012 - p.4



Socioeconomic Management Mitigation and Benefit Enhancement Measures
ᐃᓄᓱᑦᑎᓄᓐᓄᓐ ᐃᓄᓱᑦᑎᓄᓐ ᐃᓄᓱᑦᑎᓄᓐ ᐃᓄᓱᑦᑎᓄᓐ

- ◆ Preferential hiring and contracting (all communities in Kivalliq)
 - ◆ Education, training and scholarships (for workers, and school based)
 - ◆ Accommodating Inuit culture in the workplace (including Inuktitut)
 - ◆ Flexible human resource management
 - ◆ Enforced worker codes of conduct (behaviours, substances, safety, public)
 - ◆ Counseling/assistance (elders, EFAP, community offices)
 - ◆ Public education on environmental effects and management, and on uranium
 - ◆ Community contributions and IIBA
 - ◆ Iterative closure planning
- ◆ ᐱᑦᑎᓄᓐᓄᓐ ᐃᓄᓱᑦᑎᓄᓐ (ᑕᓐᓄᓐ ᓄᓄᓱᑦᑎᓄᓐ)
 - ◆ ᐃᑦᓄᓐᓄᓐ ᐃᑦᓄᓐᓄᓐ ᐃᓄᓱᑦᑎᓄᓐ ᐃᑦᓄᓐᓄᓐ (ᐱᑦᑎᓄᓐ ᐃᓄᓱᑦᑎᓄᓐ)
 - ◆ ᐃᑦᓄᓐᓄᓐ ᐃᓄᓱᑦᑎᓄᓐ ᐃᓄᓱᑦᑎᓄᓐ ᐃᓄᓱᑦᑎᓄᓐ (ᐃᓄᓱᑦᑎᓄᓐ ᐃᓄᓱᑦᑎᓄᓐ)
 - ◆ ᐱᑦᑎᓄᓐᓄᓐ ᐃᓄᓱᑦᑎᓄᓐ ᐃᓄᓱᑦᑎᓄᓐ
 - ◆ ᐃᓄᓱᑦᑎᓄᓐ ᐃᓄᓱᑦᑎᓄᓐ ᐃᓄᓱᑦᑎᓄᓐ ᐃᓄᓱᑦᑎᓄᓐ (ᐃᓄᓱᑦᑎᓄᓐ ᐃᓄᓱᑦᑎᓄᓐ)
 - ◆ ᐃᓄᓱᑦᑎᓄᓐ ᐃᓄᓱᑦᑎᓄᓐ ᐃᓄᓱᑦᑎᓄᓐ ᐃᓄᓱᑦᑎᓄᓐ ᐃᓄᓱᑦᑎᓄᓐ (ᐃᓄᓱᑦᑎᓄᓐ ᐃᓄᓱᑦᑎᓄᓐ)
 - ◆ ᐃᓄᓱᑦᑎᓄᓐ ᐃᓄᓱᑦᑎᓄᓐ ᐃᓄᓱᑦᑎᓄᓐ ᐃᓄᓱᑦᑎᓄᓐ ᐃᓄᓱᑦᑎᓄᓐ ᐃᓄᓱᑦᑎᓄᓐ (ᐃᓄᓱᑦᑎᓄᓐ ᐃᓄᓱᑦᑎᓄᓐ)
 - ◆ ᐃᓄᓱᑦᑎᓄᓐ ᐃᓄᓱᑦᑎᓄᓐ ᐃᓄᓱᑦᑎᓄᓐ ᐃᓄᓱᑦᑎᓄᓐ ᐃᓄᓱᑦᑎᓄᓐ ᐃᓄᓱᑦᑎᓄᓐ (ᐃᓄᓱᑦᑎᓄᓐ ᐃᓄᓱᑦᑎᓄᓐ)
 - ◆ ᐃᓄᓱᑦᑎᓄᓐ ᐃᓄᓱᑦᑎᓄᓐ ᐃᓄᓱᑦᑎᓄᓐ ᐃᓄᓱᑦᑎᓄᓐ ᐃᓄᓱᑦᑎᓄᓐ ᐃᓄᓱᑦᑎᓄᓐ (ᐃᓄᓱᑦᑎᓄᓐ ᐃᓄᓱᑦᑎᓄᓐ)



Socioeconomic Management – Engagement
ᐃᓄᓱᑦᑎᓄᓐ ᐃᓄᓱᑦᑎᓄᓐ - ᐃᓄᓱᑦᑎᓄᓐ

- ◆ Open houses, CLC, participation at co management meetings, special purpose meetings, community offices, responsive to requests
 - ◆ Prompt handling of any grievances
 - ◆ Dissemination of appropriate information materials, including in Inuktitut
 - ◆ Use of engagement results in Project decision making
 - ◆ Participatory environmental monitoring
- ◆ ᐃᓄᓱᑦᑎᓄᓐ ᐃᓄᓱᑦᑎᓄᓐ ᐃᓄᓱᑦᑎᓄᓐ ᐃᓄᓱᑦᑎᓄᓐ ᐃᓄᓱᑦᑎᓄᓐ ᐃᓄᓱᑦᑎᓄᓐ (ᐃᓄᓱᑦᑎᓄᓐ ᐃᓄᓱᑦᑎᓄᓐ)
 - ◆ ᐃᓄᓱᑦᑎᓄᓐ ᐃᓄᓱᑦᑎᓄᓐ ᐃᓄᓱᑦᑎᓄᓐ ᐃᓄᓱᑦᑎᓄᓐ ᐃᓄᓱᑦᑎᓄᓐ (ᐃᓄᓱᑦᑎᓄᓐ ᐃᓄᓱᑦᑎᓄᓐ)
 - ◆ ᐃᓄᓱᑦᑎᓄᓐ ᐃᓄᓱᑦᑎᓄᓐ ᐃᓄᓱᑦᑎᓄᓐ ᐃᓄᓱᑦᑎᓄᓐ ᐃᓄᓱᑦᑎᓄᓐ (ᐃᓄᓱᑦᑎᓄᓐ ᐃᓄᓱᑦᑎᓄᓐ)
 - ◆ ᐃᓄᓱᑦᑎᓄᓐ ᐃᓄᓱᑦᑎᓄᓐ ᐃᓄᓱᑦᑎᓄᓐ ᐃᓄᓱᑦᑎᓄᓐ ᐃᓄᓱᑦᑎᓄᓐ (ᐃᓄᓱᑦᑎᓄᓐ ᐃᓄᓱᑦᑎᓄᓐ)
 - ◆ ᐃᓄᓱᑦᑎᓄᓐ ᐃᓄᓱᑦᑎᓄᓐ ᐃᓄᓱᑦᑎᓄᓐ ᐃᓄᓱᑦᑎᓄᓐ ᐃᓄᓱᑦᑎᓄᓐ (ᐃᓄᓱᑦᑎᓄᓐ ᐃᓄᓱᑦᑎᓄᓐ)



Socioeconomic Management - Socio-economic monitoring (collaborative)
ᐃᓄᓱᑦᑎᓄᓐ ᐃᓄᓱᑦᑎᓄᓐ - ᐃᓄᓱᑦᑎᓄᓐ ᐃᓄᓱᑦᑎᓄᓐ (ᓄᓄᓱᑦᑎᓄᓐ)

- ◆ Parties to monitoring include KIA, GN, ANND
 - ◆ Interface expected to be Kivalliq SEMC, towards efficiencies
 - ◆ Kiggavik will collect a lot of data itself
 - ◆ Uptake of jobs, education and training, contracting
 - ◆ Work place issues – e.g. job satisfaction and advancement, health and safety, contributions to communities
 - ◆ Open to collecting more/different data, details to be worked out with Kivalliq SEMC
 - ◆ Monitoring results used to adjust socio-economic management measures
- ◆ ᐱᑦᑎᓄᓐᓄᓐ ᐃᓄᓱᑦᑎᓄᓐ ᐃᓄᓱᑦᑎᓄᓐ ᐃᓄᓱᑦᑎᓄᓐ ᐃᓄᓱᑦᑎᓄᓐ (ᐃᓄᓱᑦᑎᓄᓐ ᐃᓄᓱᑦᑎᓄᓐ)
 - ◆ ᐃᓄᓱᑦᑎᓄᓐ ᐃᓄᓱᑦᑎᓄᓐ ᐃᓄᓱᑦᑎᓄᓐ ᐃᓄᓱᑦᑎᓄᓐ ᐃᓄᓱᑦᑎᓄᓐ (ᐃᓄᓱᑦᑎᓄᓐ ᐃᓄᓱᑦᑎᓄᓐ)
 - ◆ ᐃᓄᓱᑦᑎᓄᓐ ᐃᓄᓱᑦᑎᓄᓐ ᐃᓄᓱᑦᑎᓄᓐ ᐃᓄᓱᑦᑎᓄᓐ ᐃᓄᓱᑦᑎᓄᓐ (ᐃᓄᓱᑦᑎᓄᓐ ᐃᓄᓱᑦᑎᓄᓐ)
 - ◆ ᐃᓄᓱᑦᑎᓄᓐ ᐃᓄᓱᑦᑎᓄᓐ ᐃᓄᓱᑦᑎᓄᓐ ᐃᓄᓱᑦᑎᓄᓐ ᐃᓄᓱᑦᑎᓄᓐ (ᐃᓄᓱᑦᑎᓄᓐ ᐃᓄᓱᑦᑎᓄᓐ)
 - ◆ ᐃᓄᓱᑦᑎᓄᓐ ᐃᓄᓱᑦᑎᓄᓐ ᐃᓄᓱᑦᑎᓄᓐ ᐃᓄᓱᑦᑎᓄᓐ ᐃᓄᓱᑦᑎᓄᓐ (ᐃᓄᓱᑦᑎᓄᓐ ᐃᓄᓱᑦᑎᓄᓐ)
 - ◆ ᐃᓄᓱᑦᑎᓄᓐ ᐃᓄᓱᑦᑎᓄᓐ ᐃᓄᓱᑦᑎᓄᓐ ᐃᓄᓱᑦᑎᓄᓐ ᐃᓄᓱᑦᑎᓄᓐ (ᐃᓄᓱᑦᑎᓄᓐ ᐃᓄᓱᑦᑎᓄᓐ)
 - ◆ ᐃᓄᓱᑦᑎᓄᓐ ᐃᓄᓱᑦᑎᓄᓐ ᐃᓄᓱᑦᑎᓄᓐ ᐃᓄᓱᑦᑎᓄᓐ ᐃᓄᓱᑦᑎᓄᓐ (ᐃᓄᓱᑦᑎᓄᓐ ᐃᓄᓱᑦᑎᓄᓐ)
 - ◆ ᐃᓄᓱᑦᑎᓄᓐ ᐃᓄᓱᑦᑎᓄᓐ ᐃᓄᓱᑦᑎᓄᓐ ᐃᓄᓱᑦᑎᓄᓐ ᐃᓄᓱᑦᑎᓄᓐ (ᐃᓄᓱᑦᑎᓄᓐ ᐃᓄᓱᑦᑎᓄᓐ)



Socioeconomic Management - Socio-economic monitoring (collaborative)
ᐃᓄᓱᑦᑎᓄᓐ ᐃᓄᓱᑦᑎᓄᓐ - ᐃᓄᓱᑦᑎᓄᓐ ᐃᓄᓱᑦᑎᓄᓐ (ᓄᓄᓱᑦᑎᓄᓐ)

- To assist AREVA with it's socioeconomic monitoring as the project develops, we have a few questions and suggestions
- ◆ How does the SEMC see the monitoring interface with AREVA?
 - ◆ How much analysis is reasonable and practical
 - ◆ Access to current data regarding mining effects in Nunavut would assist us in designing our socioeconomic programs
 - ◆ Migration of people
 - ◆ Housing
 - ◆ Crime rates
- ᐃᓄᓱᑦᑎᓄᓐ ᐃᓄᓱᑦᑎᓄᓐ ᐃᓄᓱᑦᑎᓄᓐ ᐃᓄᓱᑦᑎᓄᓐ ᐃᓄᓱᑦᑎᓄᓐ (ᐃᓄᓱᑦᑎᓄᓐ ᐃᓄᓱᑦᑎᓄᓐ)
- ◆ ᐃᓄᓱᑦᑎᓄᓐ ᐃᓄᓱᑦᑎᓄᓐ ᐃᓄᓱᑦᑎᓄᓐ ᐃᓄᓱᑦᑎᓄᓐ ᐃᓄᓱᑦᑎᓄᓐ (ᐃᓄᓱᑦᑎᓄᓐ ᐃᓄᓱᑦᑎᓄᓐ)
 - ◆ ᐃᓄᓱᑦᑎᓄᓐ ᐃᓄᓱᑦᑎᓄᓐ ᐃᓄᓱᑦᑎᓄᓐ ᐃᓄᓱᑦᑎᓄᓐ ᐃᓄᓱᑦᑎᓄᓐ (ᐃᓄᓱᑦᑎᓄᓐ ᐃᓄᓱᑦᑎᓄᓐ)
 - ◆ ᐃᓄᓱᑦᑎᓄᓐ ᐃᓄᓱᑦᑎᓄᓐ ᐃᓄᓱᑦᑎᓄᓐ ᐃᓄᓱᑦᑎᓄᓐ ᐃᓄᓱᑦᑎᓄᓐ (ᐃᓄᓱᑦᑎᓄᓐ ᐃᓄᓱᑦᑎᓄᓐ)
 - ◆ ᐃᓄᓱᑦᑎᓄᓐ ᐃᓄᓱᑦᑎᓄᓐ ᐃᓄᓱᑦᑎᓄᓐ ᐃᓄᓱᑦᑎᓄᓐ ᐃᓄᓱᑦᑎᓄᓐ (ᐃᓄᓱᑦᑎᓄᓐ ᐃᓄᓱᑦᑎᓄᓐ)
 - ◆ ᐃᓄᓱᑦᑎᓄᓐ ᐃᓄᓱᑦᑎᓄᓐ ᐃᓄᓱᑦᑎᓄᓐ ᐃᓄᓱᑦᑎᓄᓐ ᐃᓄᓱᑦᑎᓄᓐ (ᐃᓄᓱᑦᑎᓄᓐ ᐃᓄᓱᑦᑎᓄᓐ)



Socioeconomic Management - Socio-economic monitoring (collaborative)
 Δο/ε-η.σ.μ.η.ε <δ>ε-ε/ε - ε/εε/εεεεεεε εεεεεεεεεε (εεεεεεεεεεεεεεεε)

Information requests

AREVA has committed to respond to the more than 400 information requests by January 31, 2013?

- ◆ About 90 information requests pertain to socioeconomics

εεεεεεεεεε εεεεεεεεεε

εεεεεεε εεεεεεεεε εεεεεεεεε εεεεεεεεε 400 εεεεεεε εεεεε εεεεε εεεεε 31, 2013?

- ◆ 90 εεεεεεεεε εεεεεεεεεεεεεεεε



Inuit Impact Benefit Agreement
 ΔοΔε εεεεεεεεεεεε εεεεεεεεεεεε

▶ **Negotiations with the Kivalliq Inuit Association for an IIBA for Kiggavik began in January.**

▶ **Three meetings have been held so far**

- ◆ Next meeting scheduled for November

▶ **Most meetings are held in Kivalliq Communities**

▶ **εεεεεεε εεεεεεεεεεεε εεεεεεεεεεεε εεεεεεεεεεεε εεεεεεεεεεεε εεεεεεεεεεεε**

▶ **εεεεεεε εεεεεεεεεεεεεεεε**

- ◆ εεεεεεεεεεεεεεεεεεεεεεεεεεεεεεεεεεε

▶ **εεεεεεεεεεεε εεεεεεεεεεεεεεεεεεεεεεεεεεεεεεεεεεε**



THANK YOU!

εεεεεεεεεεεε εεεεεεε

arevaresources.ca

Check us out on  and 

εεεεεεεεεεεεεεεεεεεεεεεεεεεεεεεεεεε  εεεεεεεεεεεεεεεεεεεεεεεεεεεεεεεεεεε 

